

# RAJYA LAKSHMI ANANDA VAIBHAVAM



SHARING YOUR *Dreams*  
WITH OUR *Passion*

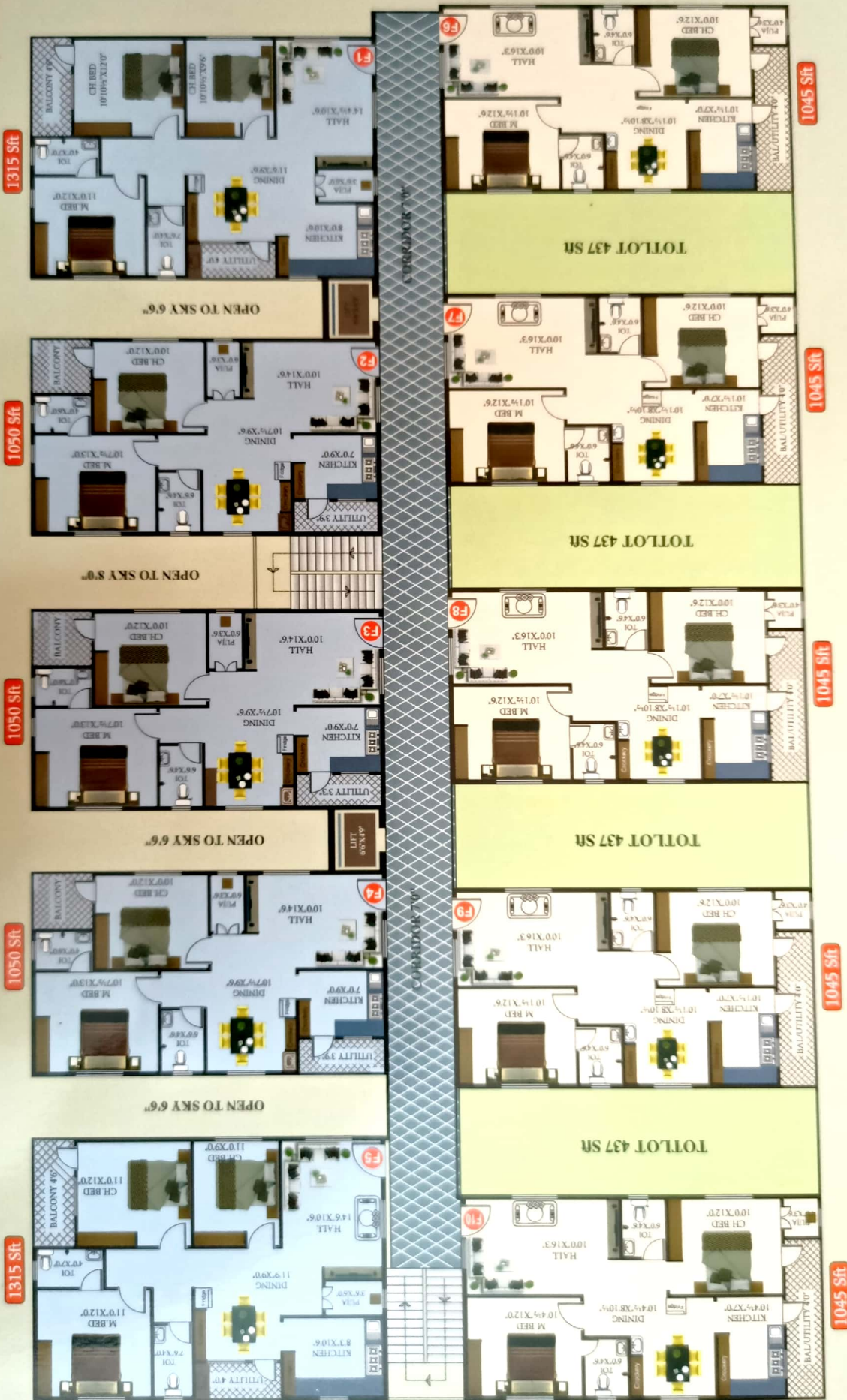


# A KORB

## TYPICAL FLOOR PLAN



N



**TYPICAL FLOOR PLAN**  
**B K R O L B**

## SPECIFICATIONS

<b>Civil</b>	RCC Framed structure to resist seismic forces and wild wind loads, Framed structure on footing over hard strata with plinth beams for extra safety. Semi wire-cut brick masonry (superstructure) in CM 1:4 Cement mortar plastering internal & external smooth finishing in CM 1:6.
<b>Doors</b>	Main door polished teak wood and remaining doors of well seasoned country wood frames and company
<b>Windows</b>	UPVC or CPVC with safety Grills.
<b>Ward-Robe</b>	Provision for ward-robe in all bed rooms & living room.
<b>Kitchen</b>	Granite platform with stainless steel sink and drain board of standard make. Ceramic tiles dado upto 2'-0" height above kitchen platform.
<b>Toilets</b>	EWC & flush tank in master toilet and IWC & flush tank in common toilet of parryware or equivalent. Wash basin (White colour) of parryware or equivalent make and CP fittings of good quality.
<b>Floor</b>	Vitrified tiles for the entire flat. Concept design wall tiles in bathroom up to 6'0" height. Anti skid tiles flooring in bathroom & Balcony.
<b>Electrical</b>	3 phase power supply with concealed wiring using good quality PVC conducts as per ISI standards, TV and Telephone points in living and master bed room Geyser point in master toilet, modular switches.
<b>Painting</b>	Internal walls two coats of primer, putty and plastic emulsion for extra durability, External walls two coats of exterior emulsion for extra durability.
<b>Corridor</b>	Internal corridor (common area) area and staircase area are granite flooring.
<b>Elevator</b>	High speed elevator as per standards
<b>Water supply</b>	Ground water through deep bore well with sufficient capacity tanks and Municipal water facility.
<b>Options</b>	Any alteration / additions can be provide if specified at the time of booking. Amenities provided at extra cost are fans, light fitting, furniture, wardrobes and kitchen cabinets.
<b>Generator</b>	Eicher / Kirloskar make Generator back up for common electricity and each flat hall and illumination and fan point for one bedroom.
<b>Extra</b>	Flooring at Cellar, CC Cameras

## LOCATION PLAN



### Location Highlights

- \* 0.5 km from NH-5
- \* 2 km from Duvvada Railway Station
- \* 5 km from steel plant
- \* Very near to Pharmacy and Engineering colleges
- \* Pollution free area
- \* Posh residential area
- \* Very near to VSEZ